

# Installation Instructions

## REPLACEMENT SEQUENCER KITS

NO. 901075 - 3 STAGE

NO. 901076 - 4 STAGE

### INTRODUCTION

These replacement sequencer kits are intended to replace the original sequencer/s in all FE, MRAC, MAC "A" Series Electric Furnaces and HMS—Series Heat Modules. Use the 3 stage kit for all 2 and 3 element furnaces and/or Heat Modules (10KW thru 17KW) and the 4 stage kit for all 4 element furnaces and/or Heat Modules (20KW and 23 KW).

**NOTE:** When replacing defective sequencers in furnaces with two (2) original sequencers *BOTH* original sequencers are replaced by the kit sequencer.

### INSTALLATION:

#### A.) Turn Off Power:



**WARNING:** Turn off all power at unit disconnects and observe all warning statements on unit.

#### B.) Mounting and Wiring:

- 1.) Remove original sequencer/s and install replacement sequencer.
- 2.) (FE & MRAC SERIES FURNACES AND HMS—SERIES HEAT MODULES.)  
Make all wiring connent connections per the unit wiring diagram.

#### 3.) MAC "A" SERIES ONLY:

**NOTE:** On Models 2454A, 2460A and 2480A the Lo-Hi fan switch (located in lower left corner of control panel) *MUST BE REMOVED*. Refer to Fig. #1 and rewire panel for single (MED) speed heating operation as follows.

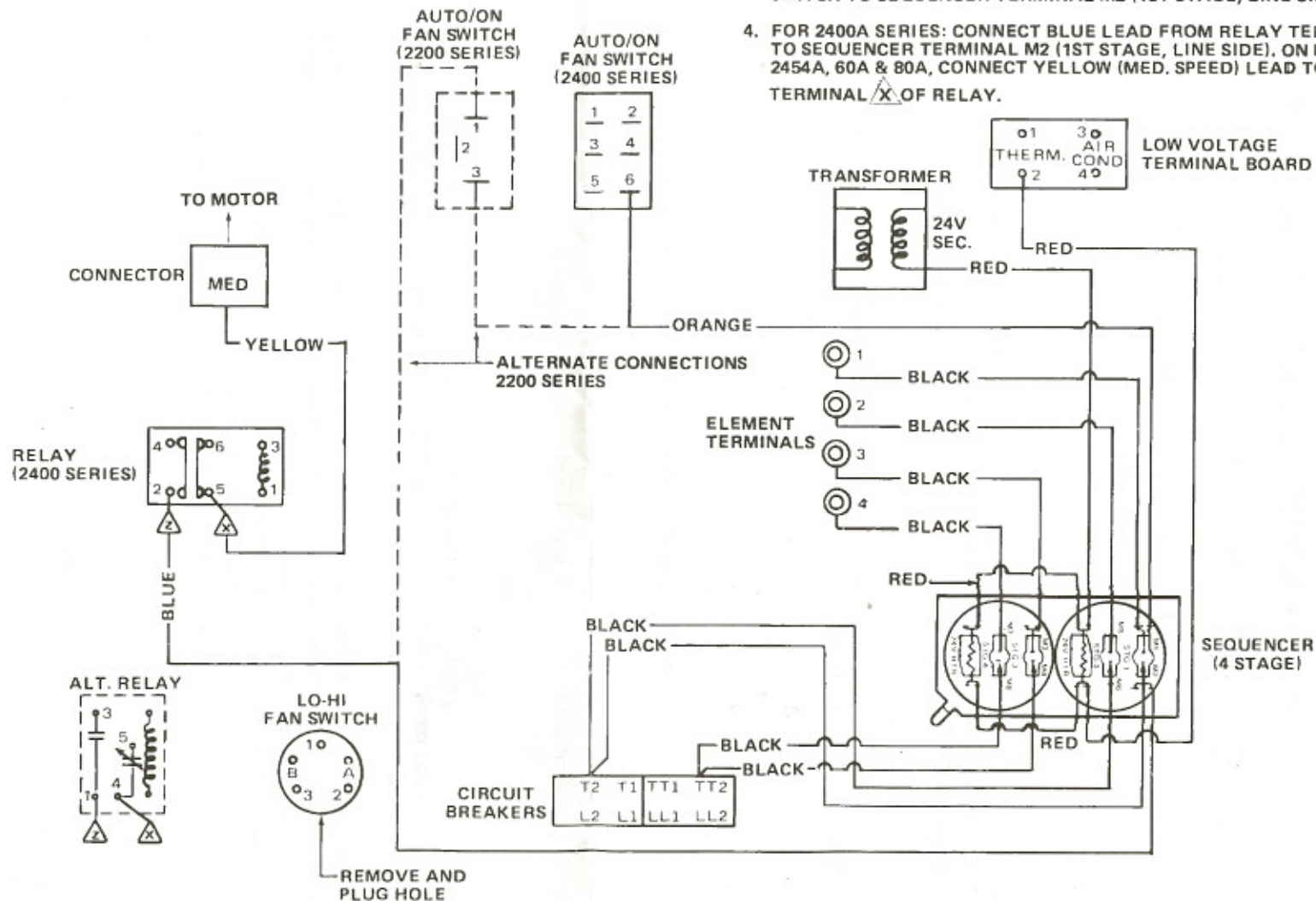
- a.) Disconnect the green fan switch lead from the  terminal of the blower relay.
- b.) Disconnect the yellow (med. speed) lead from Terminal #2 of the fan switch and reconnect to the  terminal of the relay.
- c.) Disconnect the violet fan switch lead at the heating element terminal.
- d.) Cut the red (low speed) lead off flush with the blower connector housing.
- e.) Remove fan switch and plug the exposed hole in panel using the snap-in bushing supplied with kit.

#### C.) Complete Installation:

- 1.) Check all wiring connections and replace all panels removed during installation.
- 2.) Restore power to unit.

#### D.) Check Operation:

- 1.) Set wall thermostat above room temperature and allow all stages to cycle on.  
**NOTE:** Fan must cycle on with the first stage of heat.
- 2.) Set thermostat below room temperature and allow all stages to cycle off.  
**NOTE:** Fan must cycle off with the last stage of heat.



## WIRING NOTES:

- (ALL SERIES/MODELS) CONNECT ELEMENT CIRCUIT & TRANSFORMER/THERMOSTAT CIRCUIT LEADS AS INDICATED.
- (ALL SERIES/MODELS) CONNECT ORANGE LEAD FROM AUTO/ON FAN SWITCH TO SEQUENCER TERMINAL M1 (1ST STAGE, LOAD SIDE).
- FOR 2200A SERIES: CONNECT BLACK LEAD FROM AUTO/ON FAN SWITCH TO SEQUENCER TERMINAL M2 (1ST STAGE, LINE SIDE).
- FOR 2400A SERIES: CONNECT BLUE LEAD FROM RELAY TERMINAL  $\Delta$  TO SEQUENCER TERMINAL M2 (1ST STAGE, LINE SIDE). ON MODELS 2454A, 60A & 80A, CONNECT YELLOW (MED. SPEED) LEAD TO TERMINAL  $\Delta$  OF RELAY.

## SERVICE NOTES:

- NUMBER OF ELEMENTS/CIRCUIT BREAKERS WILL VARY ACCORDING TO MODEL.
- LO-HI FAN SWITCH MUST NOT BE USED WITH THIS TYPE SEQUENCER.
- USE ORIGINAL FACTORY LEADS FOR ALL WIRING.
- REFER TO FURNACE WIRING DIAGRAM FOR OTHER FURNACE WIRING.

## REPLACEMENT SEQUENCER KITS

NO. 901075 - 3 STAGE

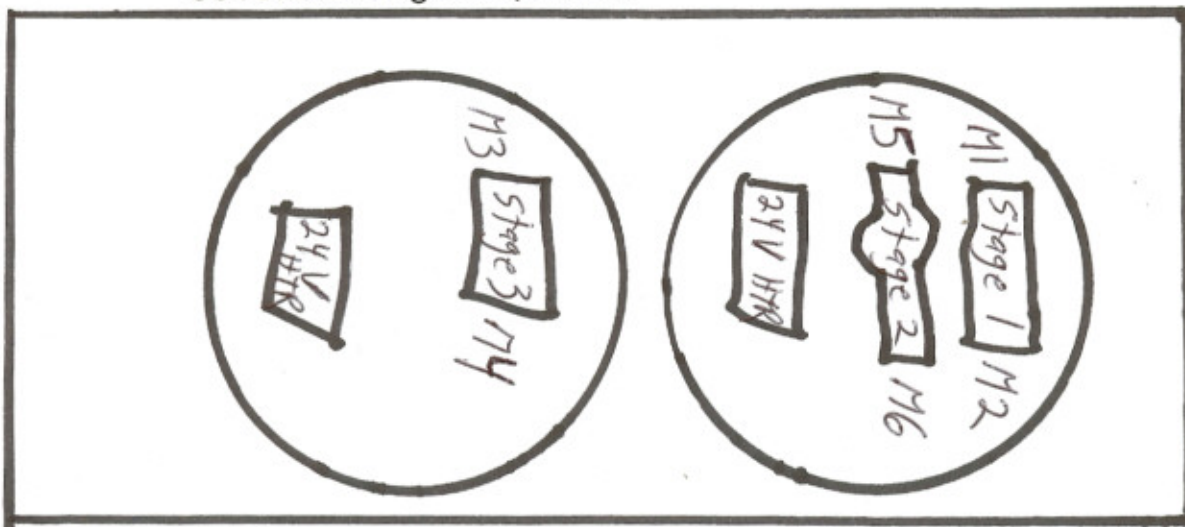
NO. 901076 - 4 STAGE

WITH MAC 2200A &amp; 2400A SERIES FURNACES

## Sequencer Notes

This page is to clarify the markings on the sequencer as shown on the above wiring diagram.

901075 3-stage sequencer



901076 4-stage sequencer

